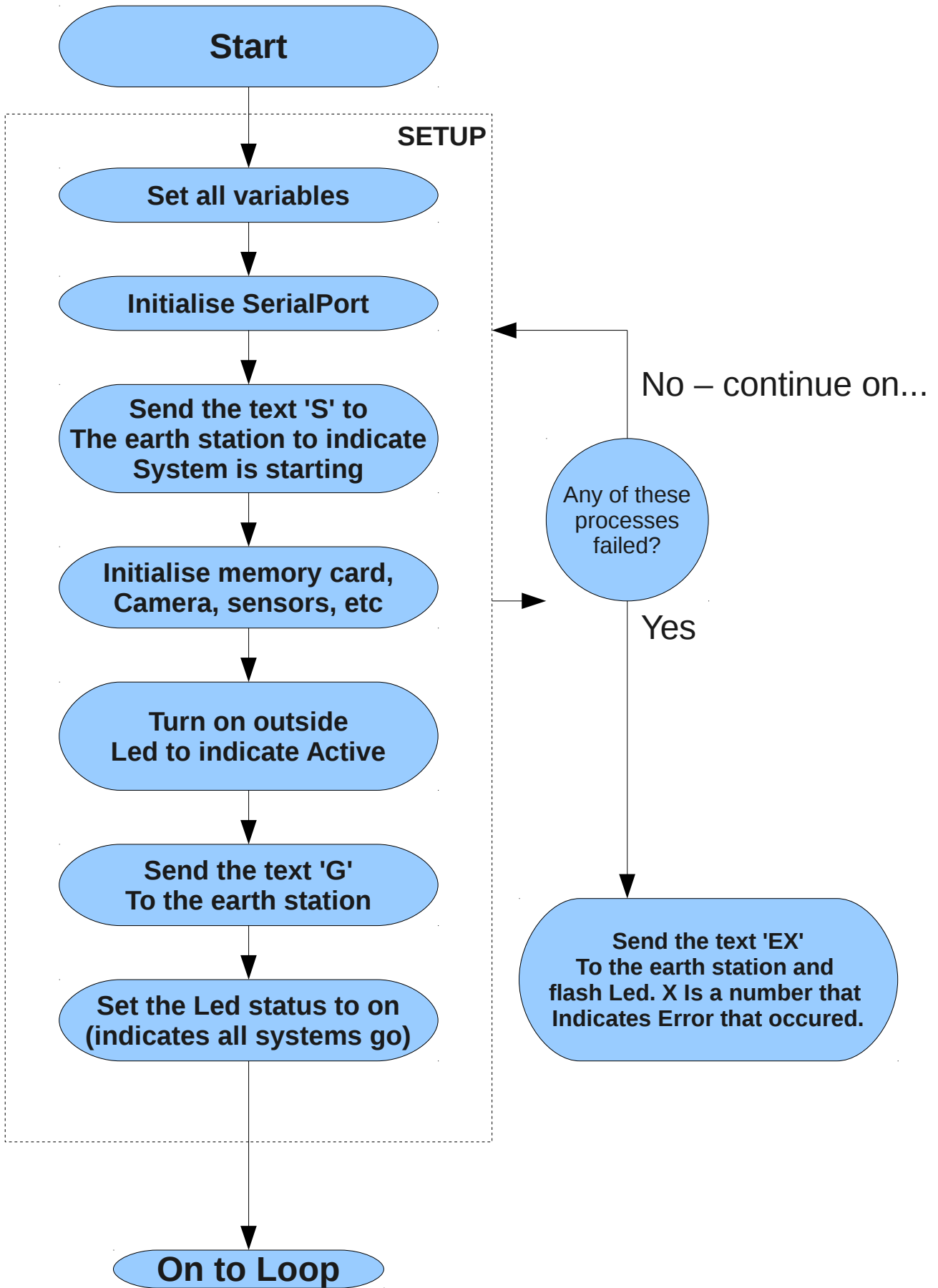
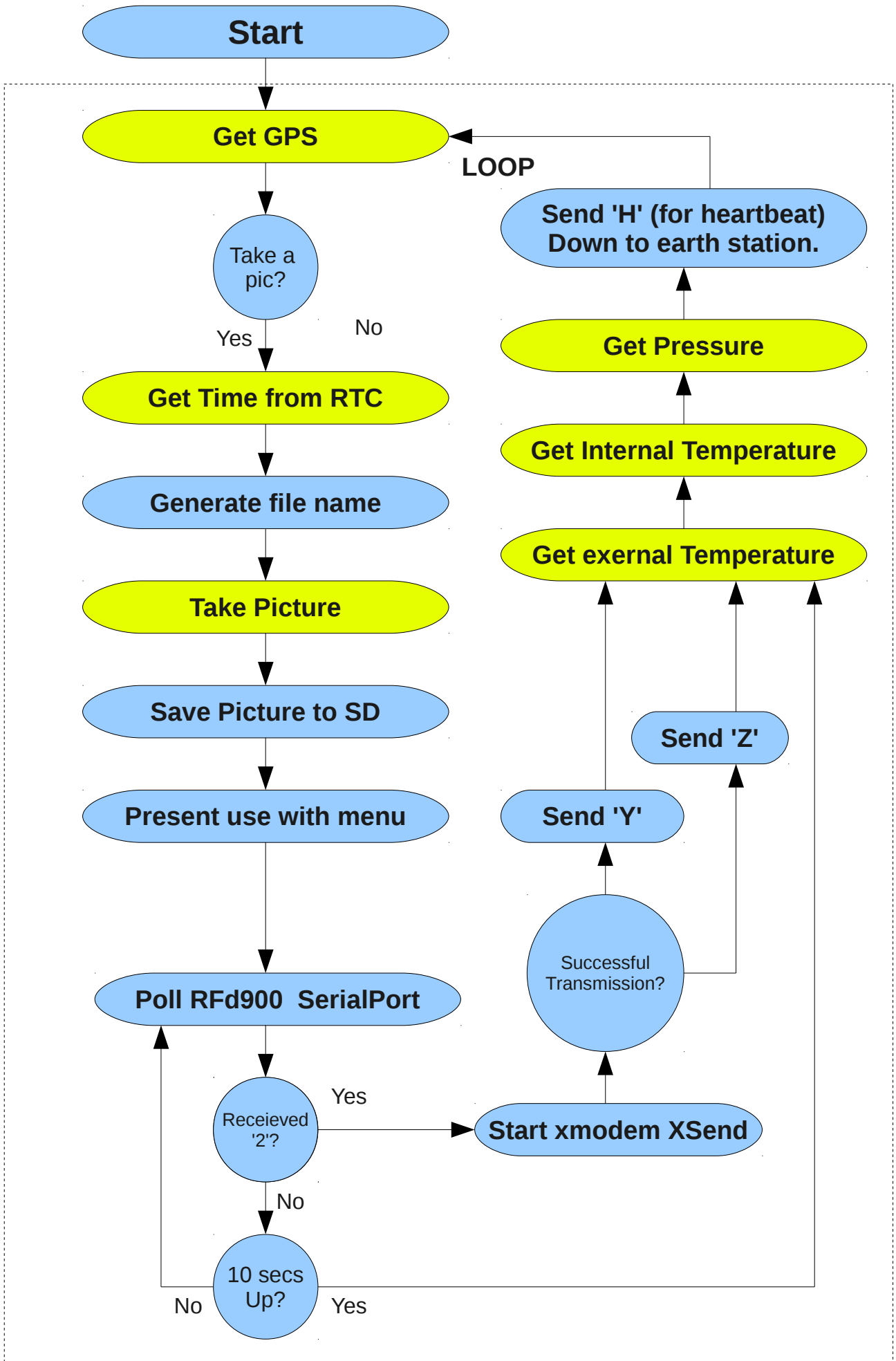


Program Design – Page 1/2



Program Design – Page 2/2



File Conventions

Get Time/Temp from RTC

File prefix: rtcrrmmdd.txt

Get Temperature

File prefix: tmprmmdd.txt

Get Pressure

File prefix: prsrrmmdd.txt

Get Accelerometer

File prefix: aclrrmmdd.txt

Get GPS

File prefix: gpsrrmmdd.txt

Get Picture

Dir: RRMMDD
File prefix: imgXXXX.txt
Log: img.log

Rrmmdd = YEAR (2digit) MONTH DAY
e.g. 130401 is 1st April 2013
XXXX is incrementing number

Includes

xmodem.h
TinyGPS.h
Fat16.h
Fat16util.h
Wire.h
SoftwareSerial

Heartbeat

Need to send heartbeat
down radio every 'cycle'.

Notes on measurements

For each entry in yellow (where a measurement is being made), we get time...to timestamp these measurements. We also save each entry to its own file, with images being the exception, which are saved to a different file each time. For the photo we keep track of times/photo file name in a separate file.

Timeouts

Some measurements take time, e.g. GPS needs to get a lock. The system can't wait indefinitely, so we should probably implement timeouts. e.g.10 secs for GPS.

Actions

- * List files
- * Get File